



# Bridle Close

Brafield-on-the-Green, Northamptonshire

oriordanbond  
SALES & LETTINGS

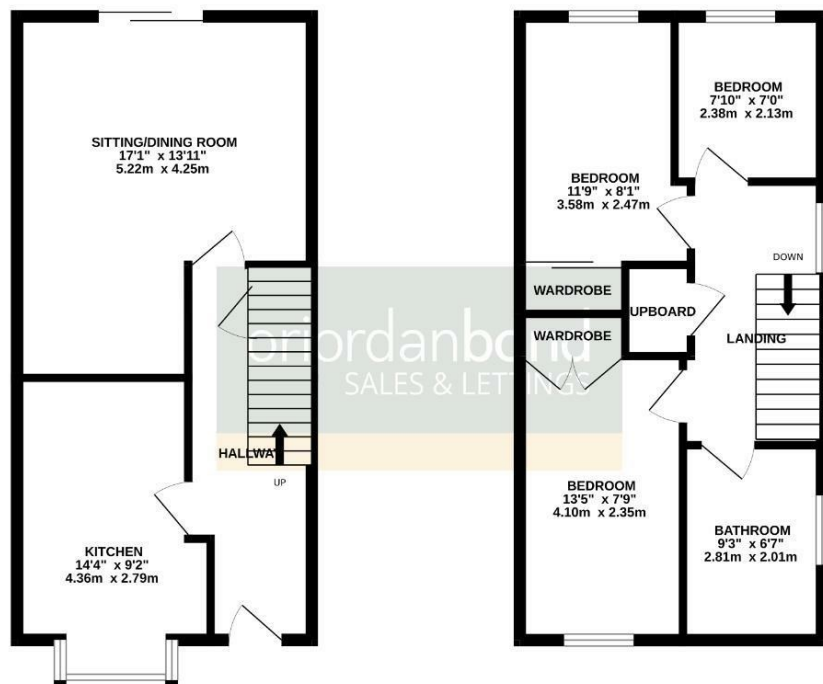




GROUND FLOOR  
422 sq.ft. (39.2 sq.m.) approx.



1ST FLOOR  
423 sq.ft. (39.3 sq.m.) approx.



Whilst every attempt has been made to ensure the accuracy of the floorplan contained here, measurements of doors, windows, rooms and any other items are approximate and no responsibility is taken for any error, omission or mis-statement. This plan is for illustrative purposes only and should be used as such by any prospective purchaser. The services, systems and appliances shown have not been tested and no guarantee as to their operability or efficiency can be given.  
Made with Metropack 02/2025

## Bridle Close

Brafield-on-the-Green  
NN7 1AS

OFFERS OVER £250,000

Offered for sale with no onward chain is this three bedroom semi-detached family home within the sought after village of Brafield-on-the-Green. The property is situated in a quiet cul-de-sac.

The accommodation comprises entrance hall, sitting/dining room, kitchen, three first floor bedrooms and a family bathroom. Outside is a front garden with driveway to side providing off road parking. To the rear is an enclosed garden with lawn and patio areas. Further benefits include uPVC double glazing and gas radiator heating. (B/845/S)

### Additional information

- Council Tax Band: B
- Energy Efficiency Rating: C

### Viewing

Viewing strictly by appointment – details below

### Disclaimer

O'Riordan Bond Estate Agents Limited has not tested apparatus, equipment, fittings or services and so cannot verify they are in working order. The buyer is advised to obtain verification from their solicitor or surveyor.

O'Riordan Bond Grange Park Sales  
01604 432007

grangepark@oriordanbond.co.uk

